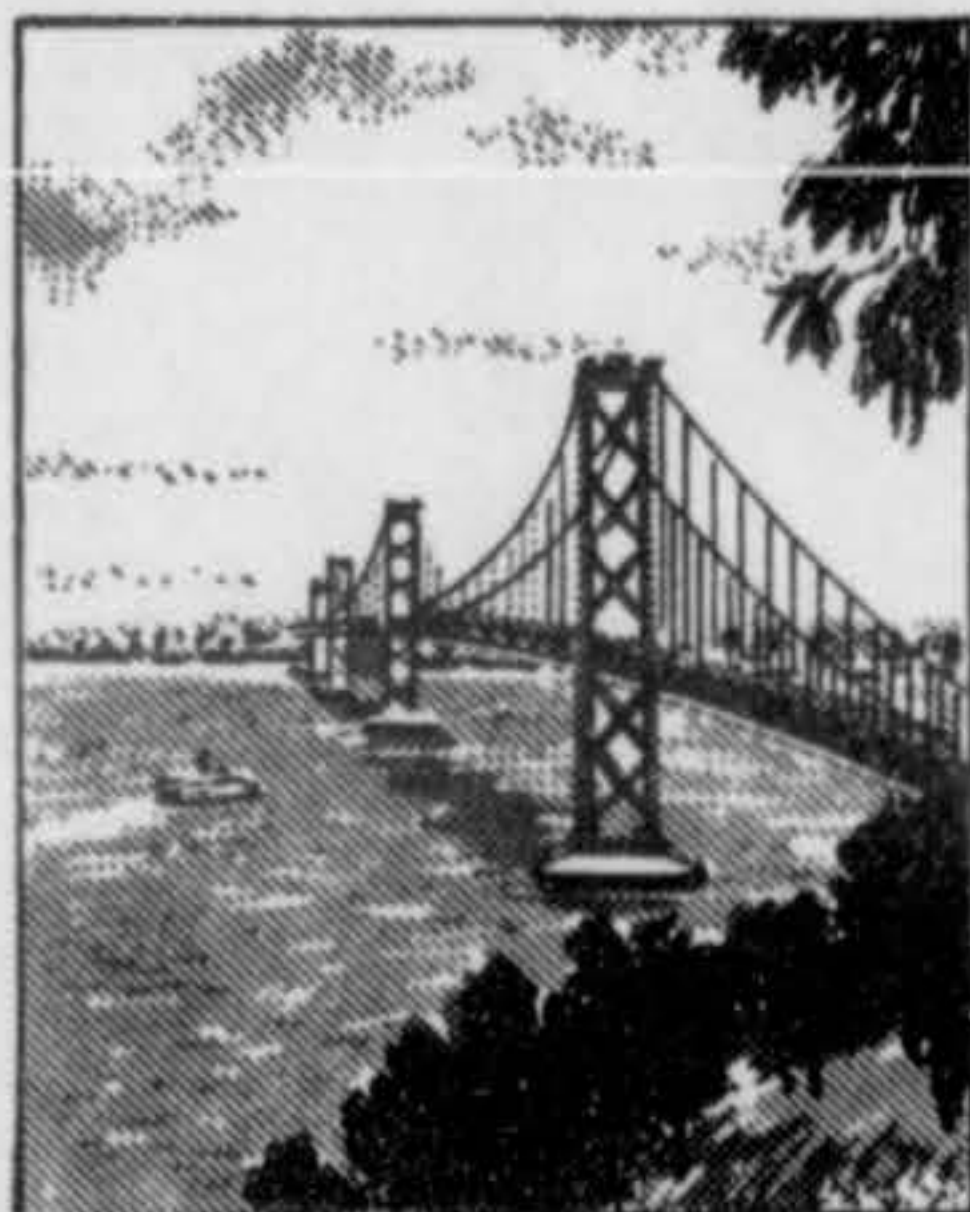


## STATION-TO-STATION RATES TO SOME OUT-OF-TOWN POINTS

RATES ARE FOR 3 MINUTES AND DO NOT INCLUDE FEDERAL TAX

NIGHT AND SUNDAY RATES APPLY FROM 6 P.M. TO 4:30 A.M. AND ALL DAY SUNDAY

From <b>SAN FRANCISCO</b> to:	Week- days	Nights, Sundays	From <b>SAN FRANCISCO</b> to:	Week- days	Nights, Sundays	From <b>SAN FRANCISCO</b> to:	Week- days	Nights, Sundays	From <b>SAN FRANCISCO</b> to:	Week- days	Nights, Sundays
(Continued from Inside Front Cover)											
Hughson, Calif.	.65	\$ .55	Miami, Fla.	\$2.50	\$2.00	Portola, Calif.	.90	\$ .75	South Bend, Ind.	\$2.35	\$1.90
Huntington, W. Va.	2.35	1.90	Milwaukee, Wis.	2.20	1.75	Providence, R. I.	2.50	2.00	South Gate, Calif.	1.30	1.10
Ignacio, Calif.	.30	.30	Minneapolis, Minn.	2.20	1.75	Quincy, Calif.	.90	.75	Spokane, Wash.	1.50	1.20
Indianapolis, Ind.	2.35	1.90	Mobile, Ala.	2.35	1.90	Quincy, Mass.	2.50	2.00	Springfield, Ill.	2.20	1.75
			Modesto, Calif.	.65	.55	Racine, Wis.	2.20	1.75	Springfield, Mass.	2.50	2.00
Isleton, Calif.	.55	.50	Mojave, Calif.	1.20	1.00	Reading, Pa.	2.50	2.00	Stockton, Calif.	.55	.50
Jackson, Calif.	.70	.60	Monte Rio, Calif.	.55	.50	Red Bluff, Calif.	.90	.75	Suisun, Calif.	.45	.45
Jackson, Miss.	2.20	1.75	Monterey, Calif.	.70	.60	Redding, Calif.	.95	.80	Sutter Creek, Calif.	.70	.60
Jacksonville, Fla.	2.50	2.00	Montgomery, Calif.	2.35	1.90	Redlands, Calif.	1.35	1.15	Syracuse, N. Y.	2.50	2.00
Jersey City, N. J.	2.50	2.00	Morgan Hill, Calif.	.60	.50	Reedley, Calif.	.95	.80	Tacoma, Wash.	1.40	1.10
Kansas City, Kan.	2.05	1.65	Morro Bay, Calif.	.95	.80	Reno, Nev.	.75	.55	Taft, Calif.	1.10	.95
Kansas City, Mo.	2.05	1.65	Mount Shasta, Calif.	1.05	.90	Richmond, Va.	2.50	2.00	Tahoe City, Calif.	.90	.75
King City, Calif.	.85	.70	Mt. Vernon, N. Y.	2.50	2.00	Ripon, Calif.	.60	.50	Tipton, Calif.	1.00	.85
Kingsburg, Calif.	.95	.80	Napa, Calif.	.45	.45	Riverbank, Calif.	.65	.55	Toledo, Ohio	2.35	1.90
Klamath Falls, Ore.	1.00	.75	Nashville, Tenn.	2.35	1.90	Riverside, Calif.	1.30	1.10	Tonopah, Nev.	.95	.70
Knights Ferry, Calif.	.70	.60	Nevada City, Calif.	.80	.70	Roanoke, Va.	2.50	2.00	Topeka, Kan.	2.05	1.65
Knights Landing, Calif.	.65	.55	Newark, N. J.	2.50	2.00	Rockford, Ill.	2.20	1.75	Torrance, Calif.	1.30	1.10
Knoxville, Tenn.	2.35	1.90	New Bedford, Mass.	2.50	2.00	Roseville, Calif.	.70	.60	Tracy, Calif.	.55	.50
Lakeport, Calif.	.70	.60	New Britain, Conn.	2.50	2.00	Sacramento, Calif.	.65	.55	Trenton, N. J.	2.50	2.00
Lansing, Mich.	2.35	1.90	New Haven, Conn.	2.50	2.00	Saginaw, Mich.	2.35	1.90	Troy, N. Y.	2.50	2.00
Las Vegas, Nev.	1.20	.90	New Orleans, La.	2.35	1.90	St. Joseph, Mo.	2.05	1.65	Truckee, Calif.	.90	.75
Lawrence, Mass.	2.50	2.00	New York, N. Y.	2.50	2.00	St. Louis, Mo.	2.20	1.75	Tulare, Calif.	1.00	.85
Lebec, Calif.	1.15	1.00	Newman, Calif.	.65	.55	St. Paul, Minn.	2.20	1.75	Tulsa, Okla.	2.05	1.65
Lemoore, Calif.	.95	.80	Norfolk, Va.	2.50	2.00	Salem, Ore.	1.25	.95	Turlock, Calif.	.70	.60
Lincoln, Calif.	.70	.60	Oakdale, Calif.	.70	.60	Salinas, Calif.	.70	.60	Ukiah, Calif.	.75	.65
Lindsay, Calif.	1.00	.85	Oceanside, Calif.	1.40	1.20	Salt Lake City, Utah	1.35	1.05	Utica, N. Y.	2.50	2.00
Little Rock, Ark.	2.20	1.75	Oklahoma City, Okla.	2.05	1.65	San Antonio, Tex.	2.05	1.65	Vacaville, Calif.	.45	.45
Live Oak, Calif.	.75	.65	Olympia, Wash.	1.40	1.10	San Bernardino, Calif.	1.35	1.15	Vallejo, Calif.	.35	.35
Livermore, Calif.	.45	.45	Omaha, Neb.	2.05	1.65	San Diego, Calif.	1.40	1.20	Ventura, Calif.	1.20	1.00
Livingston, Calif.	.70	.60	Orland, Calif.	.85	.70	San Fernando, Calif.	1.30	1.10	Visalia, Calif.	.95	.80
Lodi, Calif.	.60	.50	Orosi, Calif.	.95	.80	Sanger, Calif.	.90	.75	Waco, Tex.	2.05	1.65
Lompoc, Calif.	1.05	.90	Oroville, Calif.	.80	.70	San Luis Obispo, Calif.	1.00	.85	Wasco, Calif.	1.05	.90
Long Beach, Calif.	1.30	1.10	Oxnard, Calif.	1.20	1.00	San Martin, Calif.	.60	.50	Washington, D. C.	2.50	2.00
Los Angeles, Calif.	1.30	1.10	Pacific Grove, Calif.	.70	.60	San Pedro, Calif.	1.30	1.10	Waterbury, Conn.	2.50	2.00
Los Banos, Calif.	.70	.60	Palm Springs, Calif.	1.40	1.20	Santa Ana, Calif.	1.30	1.10	Watsonville, Calif.	.65	.55
Los Gatos, Calif.	.50	.50	Parlier, Calif.	.95	.80	Santa Barbara, Calif.	1.15	1.00	Weaverville, Calif.	1.00	.85
Louisville, Ky.	2.35	1.90	Pasadena, Calif.	1.30	1.10	Santa Cruz, Calif.	.60	.50	Weed, Calif.	1.10	.95
Lowell, Mass.	2.50	2.00	Paso Robles, Calif.	.95	.80	Santa Maria, Calif.	1.00	.85	Whittier, Calif.	1.30	1.10
Lynn, Mass.	2.50	2.00	Paterson N. J.	2.50	2.00	Santa Monica, Calif.	1.30	1.10	Wichita, Kan.	2.05	1.65
Macon, Ga.	2.35	1.90	Patterson, Calif.	.65	.55	Santa Rosa, Calif.	.50	.50	Wilkes-Barre, Pa.	2.50	2.00
Madera, Calif.	.85	.70	Pawtucket, R. I.	2.50	2.00	Savannah, Ga.	2.50	2.00	Willits, Calif.	.80	.70
Madison, Wis.	2.20	1.75	Pendleton, Ore.	1.35	1.05	Schenectady, N. Y.	2.50	2.00	Willows, Calif.	.80	.70
Manchester, N. H.	2.50	2.00	Peoria, Ill.	2.20	1.75	Scranton, Pa.	2.50	2.00	Wilmington, Calif.	1.30	1.10
Manteca, Calif.	.60	.50	Philadelphia, Pa.	2.50	2.00	Seattle, Wash.	1.40	1.10	Wilmington, Del.	2.50	2.00
Maricopa, Calif.	1.10	.95	Phoenix, Ariz.	1.40	1.10	Sebastopol, Calif.	.55	.50	Winston-Salem, N. C.	2.50	2.00
Marysville, Calif.	.70	.60	Pismo Beach, Calif.	1.00	.85	Selma, Calif.	.95	.80	Woodlake, Calif.	1.00	.85
McCloud, Calif.	1.05	.90	Pittsburgh, Pa.	2.50	2.00	Shafter, Calif.	1.05	.90	Woodland, Calif.	.60	.50
McFarland, Calif.	1.05	.90	Placerville, Calif.	.75	.65	Shreveport, La.	2.20	1.75	Worcester, Mass.	2.50	2.00
Medford, Mass.	2.50	2.00	Pontiac, Mich.	2.35	1.90	Sioux City, Ia.	2.05	1.65	Yonkers, N. Y.	2.50	2.00
Medford, Ore.	1.00	.75	Porterville, Calif.	1.00	.85	Somerville, Mass.	2.50	2.00	Youngstown, Ohio	2.35	1.90
Memphis, Tenn.	2.20	1.75	Portland, Me.	2.50	2.00	Sonoma, Calif.	.45	.45	Yreka, Calif.	1.10	.95
Merced, Calif.	.75	.65	Portland, Ore.	1.30	1.00	Sonora, Calif.	.75	.65	Yuba City, Calif.	.70	.60



## ON THE COVER

Like giant guardians of the Bay, stand the massive towers of the San Francisco-Oakland Bay Bridge. Completing the span from Yerba Buena Island to San Francisco, the western section of this famous landmark clears the harbor by 200 feet. It forms a part of the 8 1/4-mile skyway path from the East Bay shores to the towered skyline of the cosmopolitan city by the Golden Gate.