



**phone**  
**HILLCREST 5-8716**

Tested and Approved by  
Underwriters' Laboratories  
MANUFACTURED BY

**BEATTY SAFWAY SCAFFOLD INC.**  
Stockton Blvd. at 47th Ave.  
SACRAMENTO

**TOLEDO SCALE**

Repairing All Makes By  
Factory Trained Experts

New



- Auto, Truck and Wagon . . . Heavy Capacity Beam Scales
- All Types of Dial & Computing Scales
- Meat Choppers and Slicers

Complete Line of  
Used Equipment  
• Free Estimates  
Work Guaranteed

**GILBERT 3-3091**

1230 H STREET SACRAMENTO

**Charles F. E. Kennedy**

DISTRIBUTOR FOR NORTHERN CALIFORNIA

**Scaffolding**

**BEATTY ALUMINUM SCAFFOLDING—**  
BEATTY SAFWAY SCAFFOLD INC  
Stockton Blvd. . . . . HI lcrst 5-8716

**BEATTY SAFWAY SCAFFOLD INC**  
Stockton Blvd. . . . . HI lcrst 5-8716  
(See Advertisement This Page)

Continental Scaffolding Co  
4673-24th St. . . . . HI lcrst 7-9861

Safway Scaffold Inc Stockton Blvd. . . HI lcrst 5-8716

**Scaffolding Renting**

Beatty Safway Scaffold Inc  
Stockton Blvd. . . . . HI lcrst 5-8716

**PATENT SCAFFOLDING CO INC THE**  
1695 Mission St  
(Toll) Call "Operator" for. . . . . Hemlock 1-4278

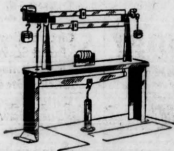
**Scales**

**AAGAR E SORENSEN**  
GLOBE-STIMPSON COMPUTING SCALES  
SLICING MACHINES & MEAT CHOPPERS  
Rep. - Jim Vaughan - Power Meat & Bone Saws  
Sneak Tenderizers  
NEW & USED - EASY TERMS  
11 Miles From Sacramento  
On 99E & 40 - Called  
Auburn Blvd. . . . . Hicky 9-5149

**BELORE HAROLD C** DAYTON  
COMPUTING PROJECT-O-SCALES  
HOBART CHOPPERS - SLICERS  
ELECTRIC MEAT SAWS  
FEDERAL STEAK MAKERS  
2916-16th . . . . . GI lbrt 3-2287

When you need quick repairs use the  
Classified Telephone Directory. It has a  
convenient listing of thousands of dealers  
and services.

**SCALES**  
for Every Purpose



Designers and Manufacturers  
MOTOR TRUCK & INDUSTRIAL SCALES  
CONTRACTORS' PORTABLE SCALES

Distributors  
DETECTO DIALS - TRINER AND  
EXACT WEIGHT SCALES

Special Scale Equipment Built to Order  
SERVICE - REPAIRS - INSTALLATION

**L. R. MURPHY CO.**

Established 1931  
1610 NO. C SACRAMENTO

In the Heart of Sacramento's  
Industrial Area

Phone HUDSON 1-0178

**Scales—(Cont'd)**

**BLAIR J N & CO INC** Established 1899  
COMPUTING SCALES  
SALES & SERVICE  
Choppers - Meat Saws - Coffee Mills  
Commercial Refrigeration  
217 N 16th. . . . . HUDsn 4-9311

**FAIRBANKS MORSE & CO** 1300 C. . . HU dsn 4-6191

**GLOBE-STIMPSON COMPUTING SCALES—**  
AUTHORIZED DISTRIBUTOR

**SORENSEN N E**  
Also Globe Slicers & Choppers  
Auburn Blvd. . . . . Hicky 9-5149

**KENNEDY CHARLES F E** 1230 H. . . . . GI lbrt 3-3091  
(See Advertisement This Page)

Mantes T R Company 236 Fremont S F  
(Toll) Call "Operator" for. . . . . Garfield 1-7007

**MURPHY L R CO** 1610 North G. . . . . HU dsn 1-0178  
(See Advertisement This Page)

**PITNEY-BOWES INC** 1727 J. . . . . HU dsn 4-3875

**SANITARY COMPUTING SCALES—**  
MACLENNAN CO 3015 Broadway HI lcrst 6-6409

Toledo Scales 1230 H. . . . . GI lbrt 3-3091

**U S SLICING MACHINE CO** . . . . . HUDsn 4-2791  
2108-16th

Waiting Scales Co 204-6th N Sacto. . . HI cky 9-9506

**Scales—Repairing**

**FAIRBANKS MORSE & CO**  
Sales & Service  
REPAIRS ON ALL MAKES  
SCALES  
Specializing in Heavy Duty Scales  
PARTS AVAILABLE  
1300 C. . . . . HU dsn 4-6191

**KENNEDY CHARLES F E**  
Repairs on All Makes of  
SCALES & FOOD MACHINES  
TOLEDO SCALE SPECIALISTS  
1230 H. . . . . GI lbrt 3-3091

**Scales—Used**

Kennedy Charles F E 1230 H. . . . . GI lbrt 3-3091

**Scalp Treatment**

**FURCHTENTH HANS**  
By Appointment  
ALL FORMS OF  
SCALP DISORDERS  
SCIENTIFICALLY CORRECTED  
Since 1921  
2500-0 . . . . . HI lcrst 6-9671

**HAVALL PRODUCTS**

Grows Hair - Eliminates Dandruff  
Prevents Falling Hair  
NO MASSAGE NECESSARY  
5974-11th Av. . . . . HIlcrst 7-9961  
If no answer call. . . . . HIlcrst 5-0307

**KEITH JOHN R**  
DR. JOHN R. KEITH,  
D.C. DERMATOLOGY  
1015-22d . . . . . HUDsn 4-4762

Kent A J 4001 Lusk Dr. . . . . IVnhoe 9-4344

**Scavengers—See Garbage Collection**

**School Equipment**

Ogle Harry B & Associates 1331 T. . . . GI lbrt 3-8543

Please look up the number in the Tele-  
phone Directory if you are not sure of it.

**School Furniture**

Cowan Products Co Inc 1915 O. . . . . GI lbrt 2-4643

Educators Furniture & Supply Co Inc  
5912 R. . . . . HI lcrst 7-5715

Ogle Harry B & Associates 1331 T. . . . GI lbrt 3-8543

**School Supplies—Retail**

**CHUCKER H S CO INC** 1201 K. . . . . GI lbrt 2-0741

Wulferth Robt E  
4620 Lemon Hill Av. . . . . HU ntr 6-1566

**School Supplies—Wholesale**

Orman & Wyant 1236 C. . . . . GI lbrt 2-1019

**Schools**

The following types of instruction, primarily  
vocational in character, will be found listed under  
their own headings, alphabetized in accordance  
with the qualifying word: Aircraft Schools;  
Automobile Driving Instruction; Culture Schools;  
Dancing Academies; Music Instruction Hdqs;  
Riding Academies; Etc

All Hallows School 5700-13th Av. . . HI lcrst 7-5621

Amer Basin School Elkhorn Blvd. . . Hicky 9-0934

Amer School  
2930 Lily Del Paso Hgts. . . . . Hicky 9-5595

Arden School Watt & Edison Av. . . IV nhoe 9-3601

Arden School Arden Acres. . . . . IV nhoe 9-1903

Bell Av School Bell Av Del Paso Hgts. . HI cky 9-9633

Ben All School  
2625 N 18th N Sacramento. . . . . HI cky 9-1434

Bryle School Dist. Todd Hunter Av. . . GI lbrt 2-4887

C K McClatchy Senior High School  
Freerport Blvd. . . . . GI lbrt 3-2591

Carmichael School Carmichael. . . IV nhoe 9-4298

Supr Oie Carmichael. . . . . IV nhoe 9-5125

Carmichael School Dist  
Office Carmichael. . . . . IV nhoe 9-4258

Laurel Ruff School Carmichael. . . HI cky 9-4618

Marvin Marshall School  
Kenneth Av Carmichael. . . . . IV nhoe 9-1337

Christian Brothers School  
21st & Broadway. . . . . HI lcrst 5-1961

Christian Bros School Students Residence  
21st & Broadway. . . . . HI lcrst 5-9557

**COMPTOMETER SCHOOL—**  
COMPTOMETER DIV FELT &  
TARRANT MFG CO  
Only Authorized Comptometer School  
719 K. . . . . GI lbrt 3-7814

**CROCKETT DANCE STUDIO**  
See Adv Under Dancing Academies  
2020 J. . . . . GI lbrt 3-5601

Del Paso Heights Grammar School  
Del Paso Hts. . . . . HI cky 9-3371

Des Rios School 700 N 12th. . . . . GI lbrt 3-5330

El Camino High School  
4300 El Camino Av. . . . . IV nhoe 9-0591

Elder Creek School Lemon Hill Av. . . HI lcrst 5-6577

**ELKINS W SCHOOL OF MUSIC**  
2001 N. . . . . GI lbrt 2-4220

Elmhurst Preschool 51st & R. . . . . HI lcrst 5-2394

Enterprise School Sierra Av. . . . . HI lcrst 6-5070

Florin East School Florin. . . . . HI lcrst 7-2589

Florin School Florin. . . . . HI lcrst 5-2985

**FORT SUTTER SCHOOL OF BUSINESS**  
CERICAL & STENOGRAPHIC PREPARATION  
FOR CIVIL SERVICE POSITIONS  
No Parking Problem  
1014-27th . . . . . HU dsn 4-1726

Fort Sutter School of Business  
1014-27th. . . . . HUDsn 4-1726  
(See Advertisement This Page)

**FREMER SCHOOL FOR SECRETARIES**  
All Commercial Subjects Taught  
2208 L. . . . . HUDsn 4-6782

Fremer School For Secretaries  
2208 L. . . . . HUDsn 4-6782  
(See Advertisement This Page)

Fruitridge School Dist 4625-44th. . . HI lcrst 6-2582

Fruitvale School 36th Rio Linda. . . . Hicky 9-8675

**FOR WAX LEFT-OVERS**  
To make easy-to-store wax cakes of  
left-over bits of paraffin from preserv-  
ing, melt and mold in muffin tins.

**Schools—(Cont'd)**

Gardenland School  
1450 W El Camino N Sacramento. HI cky 9-1276

Grant Union High School & Technical College  
Del Paso Hts. . . . . HI cky 9-2761

Haginjun School  
3080 Marysville Rd N Sacramento. HI cky 9-1379

**HEALD'S BUSINESS COLLEGE** 902 J HUDsn 4-9339  
(See Advertisement This Page)

Holy Angel School 8th & S. . . . . GI lbrt 2-8652

Holy Spirit Convent  
3920 W Land Park Dr. . . . . GI lbrt 2-7271

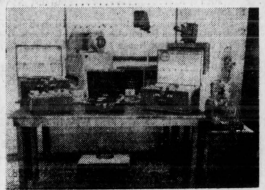
Holy Spirit School  
2920 Land Plk Dr. . . . . HU dsn 4-5663

**HOUSE OF CHARM THE** 3027 K. . . . . HU dsn 1-1871  
(See Advertisement This Page)

Immaculate Conception Parish School  
33d & Y. . . . . HI lcrst 5-9619

**INTERNATIONAL CORRESPONDENCE SCHOOLS**  
2133 Alhambra Blvd. . . . . HI lcrst 6-7312  
(Continued Next Page)

Advertise here—it pays.



Our Audio-Visual Aids to Facilitate  
Students' Learning  
**DAY & EVENING CLASSES**  
**THOMAS SHORTHAND**  
"Quicker - Easier - No Brush Up Necessary"  
Complete Secretarial Course - Days  
**BOOKKEEPING**  
Stencil & Liquid Process Duplicators  
Pretests in English, Spelling,  
Punctuation and an Aptitude Test  
in Shorthand Given Without Obligation  
Calculators: Burroughs - Comptometer  
10-Key and Electric Marchant

**FORT SUTTER SCHOOL OF BUSINESS**  
**Hudson 4-1726**  
1014-27th St. No Parking Problem

**HEALD'S BUSINESS COLLEGE**  
Established 1863  
Modern Courses in  
• ACCOUNTING  
• SHORTHAND  
• TYPING  
Also  
English - Mathematics  
Business Machines  
Allied Business Subjects  
Approved for Veterans  
**Hudson 4-9339**  
902 J SACRAMENTO

school of  
*Charm, Fashion & Photo Modeling*

LYNE HADLTON  
Regional Director

Complete Courses in  
Charm, Fashion and Photo-  
graphic Modeling, Diet  
and Exercise, Posture and  
Walking, Poise and  
Personality, Voice and  
Diction, Makeup and  
Wardrobe.

Dial  
HUDSON 1-1871

*The HOUSE OF CHARM*  
3027 K STREET  
CORNER OF ALHAMBRA

**SECRETARIAL SCHOOL**

25 Years Experience

- Shorthand
- Typing
- Bookkeeping
- Civil Service
- Comptometer
- Dictaphone

• Office Practice  
Actual Office Experience &  
Instruction in Business Etiquette  
*Individual Progress Plan*  
DAY & NIGHT CLASSES  
Call  
**Hudson 4-6782**

**CAPITOL CITY BUSINESS COLLEGE**  
2208 L STREET