

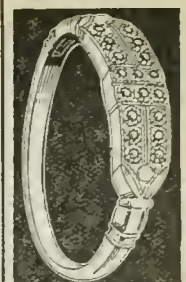
ENGINEERING SOCIETIES EMPLOYMENT SERVICE

Headquarters for Professional Engineers, Chemists
and All Technical Men

Suite 715, 57 Post Street

See Page 1718

SU tter 1684



Morgen Jewelry Co.

DIAMONDS
OLD GOLD
SILVER AND
PLATINUM

Bought

888

Market St.
Near Powell

Phone

DO uglas 3517

The Continental Insurance Co. Fidelity-Phoenix Fire Insurance Co.
Niagara Fire Insurance Co. American Eagle Fire Insurance Co.
First American Fire Insurance Co. Maryland Insurance Co.
60 Sansome Street PACIFIC COAST DEPARTMENT Phone CA field 8200

"AMERICA FORE"

Kokado Booney emp agcy 2238 Fillmore r2240 do
Kokaliss Gus cook r2407 Clay
Kokezis Harris (Yvonne) h1467 43d av
Kokilo Tolvo E (Olga) jan Pub Sch h170 Prague
Kokinias John r348 3d
Kokinias Jas r114 3d
Koklas Eliz A clk r249 Rolph
" Saml clk r530 Vermont
" Spiros D (Charlotte E) mtrmn Mun Ry h249 Rolph
Kokorin John A apt mgr h1550 Filbert
Kokorlis Theo (Stamadis) restr 200½ 4th h728 Sbrader
Kokotas Nicolas case mkr r315 Clementina
Kola Jos A (Annett) locksmith 1515 Pine
Kolacevich Rose asmlbr Schlage Lock Co r133 Raymond av
Kolarer Eug S serv sta atdt r377 Richland av
" Irene P bkpr F Thomas Dyeing & Cng Wks r377 Richland av
" Jos E formn Pac Coast Candy Co r Okld
" Saml (Caroline) stevedore h377 Richland av
" Wm G br mgr White Leg Tavern r626 Polk
Kolanoski Marcella (wid Thos) r721 Shotwell
" Theo T (Mary) pntr h721 Shotwell
Kolaopoulos Tony furns 3105 16th r354 Utah
Kolar Jos P (Marie) blrmkr h2911 16th
" L chauf r140 Jones
" Phillip furn rms 1084 Folsom
" Stanley J h1849 Page
Kolarik Adolph (Ethel) slsmn Hercules Equip & Rubber Co r2185 Bay
" Antone slsmn h2185 Bay
Kolas Saml (Josephine) clk h530 Vermont
Kolates Geo (Stamos & Kolates) r610 Geary
Kolb Abt R (Lillian) supt Am Cream Tartar Co r1362 26th av
" Allen E h2325 North Point
" Chas (Sue) mech Troy Lindy Machy Corp h8 Holyoke
" Chas B sugarwkr Western Sugar Refinery r Bkly
" Edw O (Verna) slsmn Petroleum Equip Co r920 Van Ness av
" Emma h1995 Turk
" Eug E observer U S Weather Bureau h2325 North Point
" Eug O slsmn h920 Van Ness av
" Fred W (Viola) mfrs agt 681 Market R276 h1545 Filbert
" Geo C (Thelma N) clk h2240 15th
" Grace Mrs cash S F Biscuit Co h2325 North Point
" Harry F asst mgr Hercules Powder Co r Burlingame
" Jas sugar wkr Western Sugar Refinery r Bkly
" O W slsmn Chocolate Sales Corp
" Sarah clk r618 30th av
" Viola womens furngs 474 Geary r1545 Filbert
" Violet F h1167 Bush
Kolbe Harry bag mkr r57 Taylor
" Herbt whsmn r227 9th
" Leo Gussie) clk h1392 Funston av
" W with Shreve & Co r417 Divisadero
Kolbeck Christian N (Christine) crmry wkr h158 Brighton av
Kolberg Abt J (Mary) examiner John A Whalley & Co r17 Seminole av
" Jos baker r83 Bruce av
" Louis (Belina) swchmn h152 Noe
Kolby John ironwkr r1188 Folsom
Kolbenz Anna B clk r531 Vermont
" John (Barbara) lab h531 Vermont
" Mary T clk r531 Vermont
Kolbus Margt A clk Calif Pkg Corp r Okld
Kolby Alma mach opr r59 Albion
" Geo (Dorothy C) plmbr h1310 Florida
" Henry C (Mabel) capt SFFD h2138 23d
" Henry J (Alice J) dec City of Paris Dry Gds Co r168 Seville
" Jos cook r1090 Page
" Mildred C r2138 23d
" Reinhard (Gertrude) gro 536 Mississippi h534 do
" Reinhard (Beatrice) firemn SFFD h1477 Hudson av
Koldenstrodt Fred C jr (Beatrice M) slsmn h118 Carl
" Milton E firemn SFFD r219 Clinton Park
Koldinger Alyce Mrs tchr Pub Sch r3800 20th
" Knut r562 Guerrero
" Mary h562 Guerrero
" Niels dentist 2494 Mission h3600 20th
Kolendo Chas E (Kath) h743a Minna
Kolesar John M (Georgia) clk h1348a Stevenson
Kolesik Geo r969 Golden Gate av
" Wm V (Pauline) carp h969 Golden Gate av
Kolevris Dennis (Annie) slsmn h736 Holloway
Kollas Geo (Kalioko) h1727 Balboa
Kollch Vincent h318 2d av
Kolkoff Kusima (Nellie) jan h1137 De Haro
" Mary hat mkr r1137 De Haro
Kolin Eliz slsmn Davis Schonwasser Co r424 Pennsylvania
Kollins Jas gro 1091 Market r1143 Treat
Kollopoulos John (Theodore) h358 Utah
Kollpantos Jas (Georgia) h300 Laidley
Kollonen Caled (Celia) carp h1388 Noe
" Jafet (May) carp h457 2d av
Kolk Max (Lempi) seamn h1261 Noe

Kolker C h1231 38th av
Kolkind Caroline r1156 Sutter
Kolkman Kath (wid H J) h47 Rudden av
Kolkmann Fredk W (Dora J) radio techn h85 Estero av
" Otto C uphol 332 Balboa
" Wm H (Louisa K) int dec h665 6th av
Koll Edgar W v-pres G W Thomas Drayage & Rigging Co r Elks Club
" Josephine sten Sun Life Assurance Co r1817 Calif
" Robt R with Alexander & Baldwin Ltd r Okld
Kollarik Frank jan Mills Bldg
Kollbeck Carolina E h1819 8th av
" Edith dept mgr Lyons-Magnus Inc r1819 8th av
Koller Emiel r730 Bway
" Rudolph C (Mabel) mot pict opr h102 Cordova
Kollerer Chas (Emma) carp h1031 Treat av
" Chas jr asmlbr Schlage Lock Co r1031 Treat
" Emily sten r1031 Treat av
" Frances clk r1031 Treat av
" Helen A sten W B Brandt & Co r1031 Treat
Kolligs Anlon chiropodist 275 Post 5th fl h2020 Franklin
Kolling Walter D (Mac) jan Pub Sch h147 Hartford
Kollins Thos r1485 Vallejo
" Thos A (Kath) barber h1086 Post
Kolmaister Phillip (Sophia) clk h1445 Eddy
Kollman Wm (Mary) mgr Plaza Apts h250 McAllister
Kollmann Blanche h1900 Washn
" Ray (wid Max) r1900 Washn
Kollmar Chas (Della) apt mgr h1130 Larkin
" Chas L (Della K) h746a 9th av
" Mae I tchr r746a 9th av
Kolman Ada r240 Hartford
Kolmer Augusta smstrs O'Connor Moffatt & Co r2937 Pierce
Kollmeyer Ernst delicatessen 1023 Fillmore r945 Steiner
Kolmitz S Meyer Emily McMillan mgr beauty shop 207 Powell
Kolner Alfd dresses 2224 Chestnut and 1508 Polk h2001 Pierce
Kolnes Isaac stevedore r511 30th
" Jas lab r511 30th
" Magnus (Solveig) mariner h27 Fountain
Kolod Paul (Katie) restr 364 Divisadero h1215 Oak
Kolodejnikoff Nicholas (Xenia) jan h1673 Sutter
" Vera r1673 Sutter
Kolody Walter A h1481 Eddy
Kololen Gaby h5434 Geary blvd
Kolombotos Geo C confy 1674 Haight
Kolomietzeff Valentino h951 Eddy
Koloss Frank (Stella) clinical labty 516 Sutter R611 h3621 Scott
" Henry h581a Natoma
" John lab r237 3d
" Wm M (Emily) printer h1310 Fairfax av
Kolosoff Alex clk r712 9th av
" Anatol clk r712 9th av
" Ernest r813 Kansas
" Igor (Claudia) h712 9th av
" Wm (Thelma) pntr h813 Kansas
Kolosoff Andw (Mary) h710 9th
Kolowitz Jos stevedore h242 Lee av
Kolo Jos F r125 Santa Ana av
" Robt clk r265 Fell
Kolping Society of America 462 Fillmore
Kolsberg T (Fredricka) real est 817 Ulloa r1326 44th av
Kolsen Clarence G mach r350 Capistrano av
" Gurmen F (Agnes) slsmn Glass Containers Inc h477 Moscow
" Karl L cook r367 Hanover
" Saml lab r1105 Golden Gate av
Kolstad Abt (Myrtle) mtrmn h384 31st av
" Axel carp r1000 Golden Gate av
" Tony r179 Jessie
Kolster Lillian h1100 Sacto
" Marion h300 Green
" Muriel F slsmn Raphael Welll & Co r300 Green
Kolthoff Fred (Gertrude) pntr h2448a Lombard
Kolthoff Harry (Ellie) (Wieland & Kolthoff) h3924 19th
Koltugin Victor shoe shiner r1565 Scott
Koltzoff Gregory mech h1605 O'Farrell
Kolusdian Mary Mrs h1204 Geary
Kolval Alf C (Ruth) lab h810 Stanyan
Kolybaris Panos E (Paula) h324 Duncan
Kolyer Harrison r459 Turk
Kolzef Peter uphol Metropolitan Furn Mfg Co r890 Carolina
Komada A T oriental gds 543 Grant av
Koman Peter L (Eda) formn Am Writing Mach Co h1719 24th av
Komatsu Harry restr 2130 Vallejo
" K clo clnr 1477 Eddy
" Mark S mgr Nippon Dry Gds Co r631 O'Farrell
" Sato h1703 Octavia
Komax Apartments 1855 Sacto
Komes Jerome W tmkpr h5325 Calif
" Julia M (wid John) r5325 Calif
Komesar Lena Mrs h449 Douglass
Kominsky A leather wkr r2001 Grove

Komiya Frank (Mechl) jan h224 Clement
Komyama Gihei (Kiyoko) h1812½ Post
Komlodi Philip F (Stella) mgr Normandin Bros h2601 Chestnut
Kommer Fred E (Beatrice M) br mgr Natl Shirt Shops h107 Pope
Komming Alfd r16 Leona ter
" Herta r16 Leona ter
" Rosalie Mrs r16 Leona ter
Komoriya K embroidery wkr h1785 Sutter
Komov Alice G clk r432 Kirkham
" Serge A h452 Kirkham
Komova Glasila r251 Camino Del Mar
" Vera Mrs r251 Camino Del Mar
Kompi Louise clk r733 Clayton
" Saml chauf Petaluma & Santa Rosa Exp r Mill Valley
Komsthoef Abt slsmn h765 14th av
" Harold pharm r1286 8th av
Konan Eda garmt fnshr r1719 24th av
Konantz Jack (Kath) uphol h960 Capp
Konchalski Jos J (Gladys) waiter h37a McCoppen
Kondaros Geo waiter r656 O'Farrell
Kondef Danl r66 Rotteck
" Geo r66 Rotteck
" John (Mollie) dishwshr h66 Rotteck
Kondo Koichi (Tatsu) clk h2189 Pine
Kondos John restr 252 Clement r362 4th av
Kondrashoff Vasily E (Vera) acct h2063 Sutter
Kone Eunice h135 15th av
Konetsky Andw R (Loise) supt Reliance Trailer & Truck Co h2149 Bay
" Cleo r331 5th av
" John R (Mary) pres Reliance Trailer & Truck Co h2149 Bay
" Milton J (Ida) sec-treas Reliance Trailer & Truck Co h331 5th av
Konevich Nick restrwkr r1010 Post
" Robt restrwkr r1010 Post
" Saml restr 1012 Post
Koney E J h319 Frederick
Kong Chow Friendly Society 520 Pine
" T G Co pawnbroker r850 Washn
Konjak Arne B (Nelly V) ironwkr h906 Haight
Konjaria Antonio (Angie) h49 Guerrero
KONIG, See also Koenig
" Christian (Mary) barber h64 Sharon
" Geo W (Mary) public weighing 30 Front h1801 Jefferson
" Herman bartndr r538 6th
" Hugo baker r860 Head
" J M r37 Hartford
" John E cond r65 Tara
" Leo h37 Hartford
" Wm C (Madilon) motormn h65 Tara
Konigen Andw slsmn r136 6th
Konigsberg C W dentist 490 Post R1103 r Okld
Konigshofer Leon A h2087 Union
Konishi M clo clnr 1875 Union
Konisky Jos L (Cath) barber h1487 25th av
Konkel Fred W (Pearl M) slsmn Ludlow Typograph Co h965 Darien way
Konkoff Leonid J (Sima J) slsmn h2171 O'Farrell
" Louis clk r2171 O'Farrell
Konnersman Henry G h1434 Funston av
Konnoff David (Anna) lab h709 De Haro
" Jack D lab r709 De Haro
" Morris lab r709 De Haro
Kono K h1643 Geary
" Michio (Fusayo) photo developer h2309 Calif
Konokoff Emma (wid Sevelli) h1163 Kansas
" Peter (Jennie) chauf h1163 Kansas
" Vasile jan r1163 Kansas
Konold Armine (Eliza C) eng h1250 Broderick
" Geo W (Teresa) clk SPOC h2559 33d av
" Harry slsmn r832 Green
Konon Michl (Frances) h274 San Carlos
Konow Wm (Eva) mgr Aptn Apts h407 Tehama
KONRAD, See also Conrad
" Alfd (Fannie) mach h1774 Turk
" Arth C dentist 870 Market R924 h1288 4th av
" C R restr 739 Market
" Frieda drsmkr r530 23d av
" Grace W tchr Pub Sch r450 Scott
" Howard J (Grace) dentist 870 Market R924 h1378 35th av
" John (Cecelia) r801 Golden Gate av
" Jos L (Mary) h1241 2d av
" Louis tailor r530 23d av
" Wm tailor h530 23d av
Konsmoe Lillian usher h1008 Larkin
" Ollie Mrs h1008 Larkin
Konstantinopulos Jas r32 Pond
Konstantinopulos Geo (Eustacia) h1218 Girard
" Phillip gro 1200 Mason r1172 Washn
Konton Blanche D asst C H Iverson r300 Stanyan
" Chas P (Blanche) slsmn h300 Stanyan
Kontos Geo florist 1086 Sutter
" Theo restr 708 Folsom
" Thos clo clnr 773a Pine
Kontretz Lena Mrs r109 12th av
Konze Abt W (Florence U) electn h24½ Fairmount
Konzelman Carl J clk Ry Exp Agcy r Okld
Konzen Eliz B dept mgr Calif State Auto Assn r2165 Larkin
" John J (Ellz B) h2165 Larkin