

**GOULDS
QUALITY
PUMPS**

Excel All
Others

WOODIN & LITTLE
PUMP HOUSE

33-41 Fremont St. San Francisco, Cal.

**Pumps For Every
Service and Use**

Complete Line of Water Supply
Goods. Catalogue Mailed Free
Upon Request

MONOLITH PORTLAND CEMENT CO. K P
Hutton District Representative, Mfrs Monolith Plastic Waterproof Portland Cement, 800 Claus Spreckels Bldg 703 Market, Phone Douglas 834

Monomack Mary haldrsr h19, 970 Post
Monongian Nary r67 Summer
Mononi Chas lab r427 Greenwich
Monroe Irma Mrs h3636 Sacramento
Monotti Alf pres Monotti-Larimer res Burlingame

MONOTTI-LARIMER, Alfred Monotti Pres, E F Larimer Sec-Treas, Wholesale Dairy Produce, Gold Medal Butter 250 Sacramento, Phone Douglas 4460

* Theresa A vocalist r1508 Taylor
MONOTYPE COMPANY OF CALIFORNIA, F L
Bowie Genl Mgr, Monotype Machines and Accessories 108 Rialto Bldg, Phone Sutter 6275

Monow Lloyd G with Ballour Guthrie & Co r373 4th av

Monrad Henry (Mary) h327 22d av
Monrepros Frank r2368 Geary
Monro Betty clk r60 Pleasant
* Sarah (wid Wm) h60 Pleasant
Monroe see also Munro and Munroe
* Apartments 20 Monroe
* A walter r1095 Mission
* Benj L (Ellen) clk r112 Fair Oaks
* Bertha H tchr S F State Tchrs College r555d Chestnut

* Bessie D Mrs r11, 1240 McAllister

MONROE CALCULATING MACHINE CO. A H
Ridgley Division Manager, Adding and Calculating Machines, Suite 220 Lachman Bldg 417 Market, Phone Douglas 3575

* Carrie (wid Martin) 2d hd clo 1019 McAllister h1008 do

* Chas H sec-treas Agricultural Lime & Compost Co res Berkeley

* Chas T (Josephine) clk S O Co h921 Sacramento

* Clinton C (May) slsmn Swift & Co h2663 Pine

* C A formn Mkt St Ry res San Mateo

* C B mach opr Examiner res San Mateo

* C M r364 Eddy

* Dan jr clk S O Co res Berkeley

* Earl (Lottie) mov pict opr h306 Carl

MONROE E HUBERT (Betty), Asst Cashr Humboldt Bank, r1214 Leavenworth

* E Robt mgr Voleo Products Corp res Burlingame

* Fredk M with London Assurance Corp res Redwood City

* F h7, 830 Sutter

* Henry E (Lola; Harding & Monroe) h2823 Divisadero

* Howard C (Josephine) h2919 Pacific av

* Hudson M (Bertha) tchr Pub Sch h355 Chestnut

* H M r4, 1910 California

* John r18, 715 McAllister

* John E slsmgr Agricultural Lime & Compost Co res Berkeley

* John F (Cath) with Call r2177 Turk

* J r238 Eddy

* J bkpr Greenwood & Anderson r1259 O'Farrell

* Lela M h275 Parker av

* Lea G pres Monroe Lyon & Miller and Los Altos Country Club r830 Sutter

* Levi G (Sara E) aud Graf Productions 830 Powell

* Lola C v-pres Miss Claves r2623 Divisadero

MONROE, LYON & MILLER (L G Monroe, W C Lyon, L J Miller), Real Estate and Agents for Los Altos and Belmont Country Club Properties, 5th Floor California Pacific Bldg 105 Montgomery, Phone Douglas 1767

* Martha B tchr r2321 Sacramento

* Mary r44 McAllister

* Ozalee ston r443 27th av

* Robt (Jane) electn h1060 Sanchez

* Ruth slsmn h435 Oak

* School Eveldstov av cor Lisbon

* Thoe (Amelia) r65 Sharon

* Wm H h285 Miramar av

* Willis S genl mgr Bullock & Jones res Oakland

Monrovia Apartments 20 Monroe

Monroy Benj (Ethel; housem) h1631 Golden Gate av

* Chas (May) hB, 400 Connecticut

* Ignacio lab r1234 Mason

MONS

Mons Boyd clk Examiner r515 Octavia

* Ishmael r62 Turk

Monsab Ezio lab h520a Lombard

Monsalva Carlos J v-consul Peru and supt Peoples Baking Co h 25 Woodland av

Monsalva C G r606 Post

MonSanto Anton chauff r2930 Sacramento

Monseus Edgar (Ellz) bkpr Pac Portland Cement Co r6, 5907 Geary

* Henry lab r1030 1/2 McAllister

Monselgneur Anton R clk S O Co r3454 18th

* Bertha (wid Anton) h3454 18th

* Myrtle A ins underwriter r3454 Lexington av

Monsea Andrew eng h6115 California

* Leo J clk Baker Hamilton & Pac Co r1315 Polk

* Louise E (wid Mons) matron h1348 Union

* Martha (wid Ole) h1022a Shtwell

* Monrad (Minnie) carp h1546 Page

Monserratt Saml A (May C) h1980 Washington

Mossett Dora smstrs r1368 8th av

Monson see also Munson

* Albert tmstr r648 Hampshire

* Benj lab h517 Divisadero

MONSON BROS (O Monson, H E Rahlmann), General Contractors 309, 251 Kearney, Phone Douglas 6619

* Chas E (Nellie; Acme Planing Mill) h1499 5th av

* Clyde R slsmn r4126 Anza

* Estelle tchr r4520 California

* Fletcher see Hanlon D D & S B Co res Piedmont

* Folke (Bettie C) bldr h1685 8th av

* Fredk II (Joice A) dept mgr Dunhan Carri- gan & Hayden Co h1249 Filbert

* Gustave (Jennie) lab h209 Vicksburg

* L W formn fut Priuiling Co res Mill Valley

* Olaf (Anna; Monson Bros) h15 Plato

* Oscar (Hilda) mgr Mount Washington Apartments h1, 1401 Jones

* Oswald furn 948 Laguna r1109 do

* P E formn Stewart Elec Co res Berkeley

* Ruby r1, 1401 Jones

* Rose student r209 Vicksburg

* Saml B slsmn r1249 Filbert

* Sidney jwlr h1, 790 Page

* Theo F clk Am Bank r1401 Jones

* Tillie (wid Andrew) h648 Hampshire

* Torkel L Mrs h7, 2185 Hayes

Monsport John J (Mae) lab h39b Albion

Monsiniat Frank (Louise) pntr h2 Decatur

Mont Maurice A (Celcia S) mstr mar r1800 McAllister

* Eton Alvin sten Getz Bros & Co r3850 Army

* Edgar M clk Standard Underground Cable Co r3850 Army

MONT-MARTRE ART STUDIO (L F Fighiera), Art Goods, 625 Larkin, Phone Prospect 10343

* Otto W (Emily) mstr mar h3850 Army

* O Rudolph (Clara) radio eng r3850a Army

Montabom Blaise meat ctr r433 4th av

* Marie (wid John) h433 4th av

Montag Hiram J (Norina) slsmn h3221 San Jose av

Montagnio Giuseppe lab h1148 York

Montago Angelo (Flora) eigarmkr h1327 Egbert av

* Gregorio (Mary h11 Brush pl

Montague Cecil P watchmn P O res Alameda

* Chas C (Mollie) sta eng h426 Guerrero

* Danl (Grace) electn h2372 Sutter

* Edw E ball player r3058 22d

* Edw E (Esther) elev opr Levenson & Co r12 Vicksburg

* Frederlea (wid Edw F) h3058 22d

* Harry J r3058 22d

* Helen V teller Mission Savings Bank r126 Guerrero

* H h45, 903 Pine

* Jas lns 1171, 760 Market r405, 516 Ellis

* Olive (wid Walter h308 Hanover D C

* Peter (Mary) contr r2887 Green

* Peter Indrywkr r3486 19th

MONTAGUE PIPE & STEEL CO. B W Henning Sec, O H Fisher Pres and Genl Mgr, Riveted Steel Pipes, High Pressure Pipe-Lines, Oil and Water Tanks, Steel Flumes, Syphons, Stacks, Montague Well Casing 803-804 Hobart Bldg, Phones Kearney 698-699, Works 17th and Kentucky (3d) (See page 150).

Potter School for Boys

Classes for
boys of
all ages

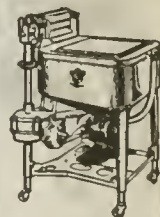
Accredited
to
Universities

Supervised
Study and
Athletics

14th Year
opens
Sept. 3
at 1899
Pacific Ave.

Phone
West 711

See Page 197



Maytag

It's a
World
Leader
and a
World
Beater

For
Demonstration
Call

Schlucters

2762 Mission
Mission 390-1

Crystal Palace
Mkt. 1259

1158 Market St.
Hemlock 4309

428
Columbus Ave.
Garfield 3566

See Page 212

NORTHWESTERN MUTUAL LIFE INSURANCE COMPANY

CHANCERY BUILDING, 564 MARKET STREET

E. J. THOMAS, GENERAL AGENT

TELEPHONE KEARNY 4485

SEE PAGE 145