

G. W. PRICE Pump and Engine Company

MANUFACTURERS OF

HIGH GRADE PUMPING AND POWER MACHINERY

PUMP CAPACITIES FROM 10 GALLONS PER MINUTE TO 100,000 GALLONS PER MINUTE

TYPE "B. B." (Newly Invented) FITTED WITH BALL BEARINGS ALL OVER TO TAKE CARE OF LOAD AND THRUST

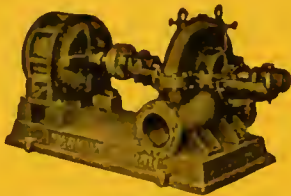
TYPE "S. S." LATEST MODEL OF DOUBLE BEARING DOUBLE SUCTION HAVING SHELL DIVIDED ALONG AXIS OF PUMPS

EXCELLENT LINE OF VERTICAL TURBINE PUMPS FOR SHALLOW AND DEEP BORED WELLS

FULL LINE OF GAS AND OIL ENGINES EVERYTHING FOR IRRIGATION. WRITE US

PROMPT DELIVERIES

1350 FOLSOM STREET :: :: SAN FRANCISCO, CALIF.



"AMERICAN-MARSH" CENTRIFUGAL



"MARSH" STEAM

SIMONDS MACHINERY CO.

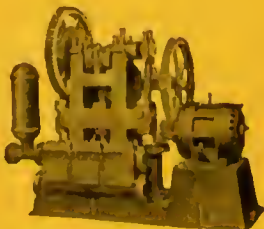
117-121 New Montgomery Street

TELEPHONE KEARNY 1457

"KEWANE" Water Supply Systems

—ALSO—

"LUTWIELER" Non-Pulsating, Deep Well Pumps



"DEMING" TRIPLEX



"KEWANE" WATER SYSTEM