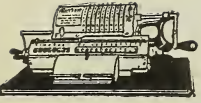


# REALTY EXPERTS ALVA F. PAGE CO.

N. E. Cor. 13th and Webster Sts.  
PHONE OAKLAND 1707

1540

1917 POLK-HUSTED DIRECTORY CO.



THE  
PONY  
MARCHANT

**\*Pasteurized Milk**  
**JERSEY MILK CREAM AND BUTTER** Co 695 37th Branch 1437 46th av (See right bottom lines)  
**WALNUT GROVE CREAMERY** 41st and Market; Branches 1808 San Pablo av and 805 E 14th (See left top lines)

**Pasteurizing Machinery**  
**JENSEN CREAMERY MACHINERY** Co Landregan and Powell Emeryville

**Patent Attorneys**  
**DEWEY, STRONG & TOWNSEND** 911-916 Crocker bldg San Francisco  
**GRIFFIN CARLOS P** 704 Pacific bldg San Francisco

**SCHROEDER H C** 417 First National Bank bldg (See right side lines)

**STOCK WM A** 210 Syndicate bldg (See adv)

**W. A. STOCK** Patent Attorney

210 SYNDICATE BLDG.

Tel. OAK. 1155

**PATENTS**

**\*Patent Medicines**  
 See Medicine Manufacturers

**\*Patent Models and Drawings**  
**GRIFFIN CARLOS P** 704 Pacific bldg San Francisco

**SCHROEDER H C** 417 First National Bank bldg (See right side lines)

**STOCK WM A** 210 Syndicate bldg (See adv)

**\*Patrol Service**  
**PINKERTON'S NATIONAL DETECTIVE** Agency 214 Flood bldg San Francisco

**Pattern and Model Makers**  
**ANDERFUREN & BROWN** 419 3d (See Classified Model Makers)

Bridges J F 1546 Pearl Ala

Hunter R G 467 3d

Newman Jno 221 Washn

**PHOENIX IRON WORKS Inc** 703 2d (See Classified Foundries)

**\*Paving—Asphalt**  
 (See also Contrs—Paving)

**BILGER FRANK W** (Successor to Oakland Paving Co and Oakland Building Material Co) 5000 Broadway (See left side lines)

**\*Paving—Contractors**  
**BILGER FRANK W** (Successor to Oakland Paving Co and Oakland Building Material Co) 5000 Broadway (See left side lines)  
 California Bitulithic Co 4030 Hollis  
**OAKLAND PAVING CO** (Frank W Bilger Successor) 5000 Broadway (See left side lines)

**\*Paving Stone**  
**BILGER FRANK W** (Successor to Oakland Paving Co and Oakland Building Material Co) 5000 Broadway (See left side lines)

**\*Paving and Street Work**  
**SUNDBERG E H** 1206 Broadway

**Pawn Brokers**  
 Bernstein & Mersereau 705 Bway  
 Goldwater M H 835 Bway  
 Jacobs Barney 1101 Bway  
 Lewis F F 932 Washn  
 Riskin A A 916 Bway  
 Riskin S E 900 Bway  
 Shane H M 903 Bway

**Peanuts and Peanut Butter**  
 California Peanut Co 630-634 20th  
 Petroff Marin 2001 Shattuck av Eklv  
 Rosefield Packing Co 1916 Webster Ala

**Pension Attorneys**  
 Cannon Anna A 1007 Bway

**Perfume Manufacturers**  
 Andrews & Cooper 2115 Channing Bkly  
 Bull C F 1432 70th av

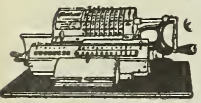
**\*Pharmacists**  
**BOWMAN DRUG CO** 1301 Broadway and 1249 13th av Oakland and Center cor Shattuck av Bkly (See left top lines)

**Phonograph Records**  
 (Dises and Cylinders)  
**KOHLER & CHASE Inc** 535 14th (See Classified Pianos and Organs)

**Phonographs**  
**FOX PIANO CO** 582 14th  
**JACKSON FURNITURE CO** Clay bet 13th and 14th (See right bottom lines)  
 Oakland Phonograph Co 473 12th  
**SHERMAN CLAY & CO** Clay sw cor 14th (See p 16)  
 Styles J H 382 12th

**\*Photo Engravers**  
 See Engravers—Photo

Quick  
Accurate  
Easily Operated  
Compact  
Practically Noiseless



**PRINTING AND BINDING || TRIBUNE**  
 WE ALWAYS PRINT THIS DIRECTORY || THE LARGEST COMMERCIAL PRINTING HOUSE IN ALAMEDA COUNTY