

SARGEANT



SEWING
MACHINES



RENTING
REPAIRING

531 12th St. Bet. Washngtom & Clay

CAN

OAKLAND

GAR

205

antz Nathan supt Lace House, r 831 Madison
 arafia Antone, carp, r 27 Boehmer
 August, plumber, r 27 Boehmer
 Jos, mach, r 27 Boehmer
 Manuel, brass finisher, r 27 Boehmer
 Mary Miss, spinner, r 27 Boehmer
 Matilda Miss, r 27 Boehmer
 araventa Chas, cementwkr, r 1080 e 17th
 John, plumber, r 1080 e 17th
 Louts, r 1080 e 17th
 Stephen, tailor, r 1080 e 17th
 arbach John J (Garbich & Miloslavich),
 r 1048 Peralta
 & Miloslavich (J J Garbich, B Milo-
 slavich) restaurant 1801 7th
 arbis John A, tailor A S Cohn Co, r
 1200 7th
 arbutt A Dov, clk, r 528 18th
 arcelon Chas D, clk Geo N Pierce Co, r
 1013 Clay
 Sarah R Mrs, r 1063 Oak
 arcia A Mrs, r 1268 Webster
 Alex, glovemkr, r 422 B
 Anton, lab, r 725 Chester
 Antone, barber 232 San Pablo av, r 2146
 Peralta
 Antone, emp S P Co, r 1314 12th av
 Antone, lab, r 1416 18th
 Antonio C, barber 265 B
 Chas, salesman, r 515 39th
 Clarence, asst bkpr Fossing & Galla-
 gher, r San Leandro
 Edw A, emp Oakland Carriage & Im-
 plement Co, r San Leandro
 Florence Miss, r Hotel Albany
 Frank, r 515 39th
 Frank, barber, r 752 e 14th
 Frank, foreman C C Mills, r King av nr
 Old Co rd
 Frank, lab, r Lancaster cor Chapman
 Frank H, r 1175 16th av
 Geo B, bkpr, r 537 Hobart
 John, emp S P Co, r 422 B
 John Jr, carp, r 422 B
 Jose, r 306 B
 Jos, r 1457 5th
 Jos, bartndr, r 1407 11th
 Jos, foreman C C Mills, r King av nr
 Old Co rd
 Jos, lab, r 1359 e 10th
 Jos, lab, r Lancaster cor Chapman
 Jos H, clk E D Williams, r San Leand-
 ro
 Lizzie Miss, r 515 39th
 Louis, teamster E L Blackman, r San
 Leandro
 Mae Mrs, r 1843 Grove
 Manuel, r 763 e 12th
 Manuel, r 1505 3d
 Manuel, r King av nr Old Co rd
 Manuel, barber A Garcia, r 232 San
 Pablo av
 Manuel, lab, r 1416 18th
 Manuel, lab, r 1669 Pacific av
 Manuel, shoemkr 804 e 14th
 Manuel, teamster E L Blackman, r
 San Leandro
 Mary Mrs, r 1870 8th
 ard Chas A, bkpr H N Gard, r 1021
 12th
 Dena Miss, r 1021 12th
 Emma Miss, stenog S F, r 1021 12th
 Herman N, paper, 403 12th, r 1021 12th
 John S, lather, r 564 58th
 Minnie Miss, r 1021 12th
 Nicholas, r 1021 12th
 Simeon, milk dlr, r 587 45th
 ardella John B, copyist Co Recorder, r
 1014 7th
 arden Lily Mrs, r 756 7th

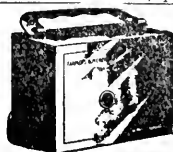
NEW
WELLINGTON COAL
 MINED AND SHIPPED BY
WESTERN FUEL CO.
 FIRST & MARKET STREETS

Gardiner Anwyl O, painter, r 1534 Edy
 —Edwin, emp Reese Waterproof Mfg Co,
 r 1160 1/4 7th
 —Florence A Miss, r 1376 19th av
 —Helen C Miss, r 524 Jones
 —Hobart, r Hotel Touraine
 —Jas T (H H Baker Sign Co), r 779 10th
GARDINER JAMES THORNTON, pres
 Gardiner-Mitchell Co, r 524 Jones
 —Jennie Miss, teacher music, r 779 10th
 —John S, boilermr S P Co, r 1787 7th
 —Lorenzo F, r 1815 60ss
 —Mildred Mrs, r 1205 Peralta
 —Miriam B Miss, r 524 Jones
GARDINER-MITCHELL CO, J T Gardi-
 ner pres, John Mitchell vice pres, gro-
 ceries, 1211 Broadway and 16 San
 Pablo av, tel Main 455 and 116
 —Mittie Miss, r 577 35th
 —Richard P M, painter 1110 Franklin, r
 680 Brockhurst
 —R K Mrs, r 1769 19th av
 —Thos G Mrs, r 1376 19th av
 —Thos M, cashier S F, r 376 19th av
 —Wm, bakery 906 7th and groceries,
 1153 1/2 7th, r 1160 1/4 7th
 —Wm Jr, candy mfr 1556 7th, r 1017 Pe-
 ralta
 —Wm M, atty S F, r 524 Jones
 Gardner Chas M, r 1379 4th av
 —Claude V, cond O T, r 615 18th
 —Cornelia Mrs, teacher dress cutting, 356
 10th
 —D T, salesman J T Moran, r 615 18th
 —Edna L Miss, teacher, r 1314 8th
 —Emma L Mrs, r 1447 Webster
 —Esther Miss, r 1447 Webster
 —Frank, lab, r 551 Franklin
 —Geo P, r 1278 e 22d
 —Hiram S, eng S P Co, r 1314 8th
 —John C, shipfitter, r 865 Jackson
 —Jos P, draftsman, r 539 16th
 —Lizzie Mrs, dressmkr, r 236 Harlan
 —Lorenzo D, carp, r 805 Brush
 —Mae Miss, stenog, r 865 Jackson
 —Robt, emp S P Co, r 501 e 11th
 —Robt Jr, clk store dept S P Co, r 572
 10th
 —Roy, bkmm S P Co, r 966 Kirkham
 —Sterling M, electr, r 1379 4th av
 —Wm E, insp O T, r 4835 Maple
 Gardon Frank, tailor E Rehor, r 670 e
 16th
 Garese Steven, emp Compiano & Rolleri,
 r Alameda
 Garfield Evening School, e 17th cor 53d av
 —John D, died Jan 22, 04
 —School, Mrs Ellen Gibbs prin, e 17th cor
 23d av
 Garfinkle Bros (H A and I), picture
 frames 908-B 7th
 —Harry A (Garfinkle Bros), r S F
 —Isidore (Garfinkle Bros), r S F
 —Leo, propr Union Portrait Co, r S F

BEKINS VAN and STORAGE CO., of Oakland
 PACKING, MOVING AND STORING HOUSEHOLD GOODS and MERCHANDISE and SAN FRANCISCO.
 Brick Warehouse, largest in city; electric elevators, separate locked rooms, you carry the key.. Cheap Insurance. We use Vans
 only. Experienced help, a reliable firm. Reduced rates on shipment of household goods, to and from all points East and South.

Office No. 1916 BROADWAY Telephone MAIN 907

Use a Home Savings Bank
 YOU HAVE THE BANK
 WE HAVE THE KEY..
 WE WILL LOAN YOU ONE



FARMERS & MERCHANTS
 SAVINGS BANK

1103 Broadway, - Oakland